

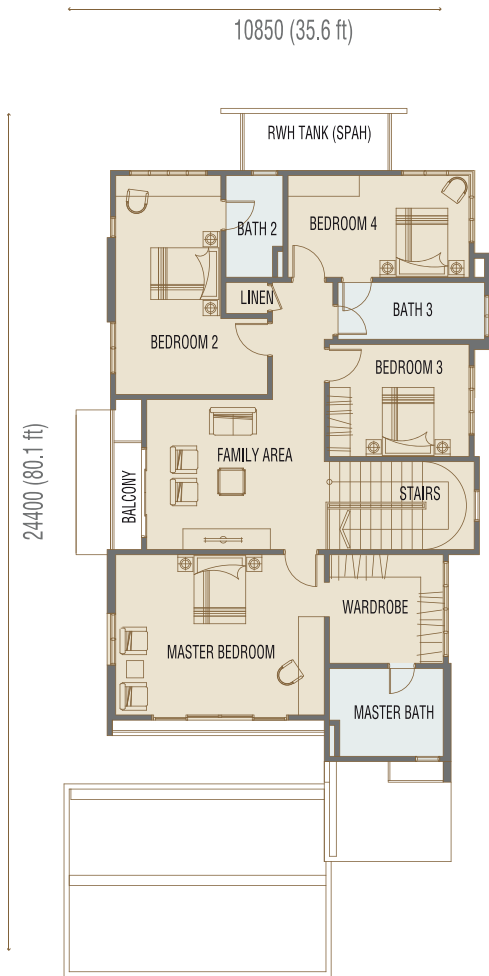


MARAKAS VILLAS

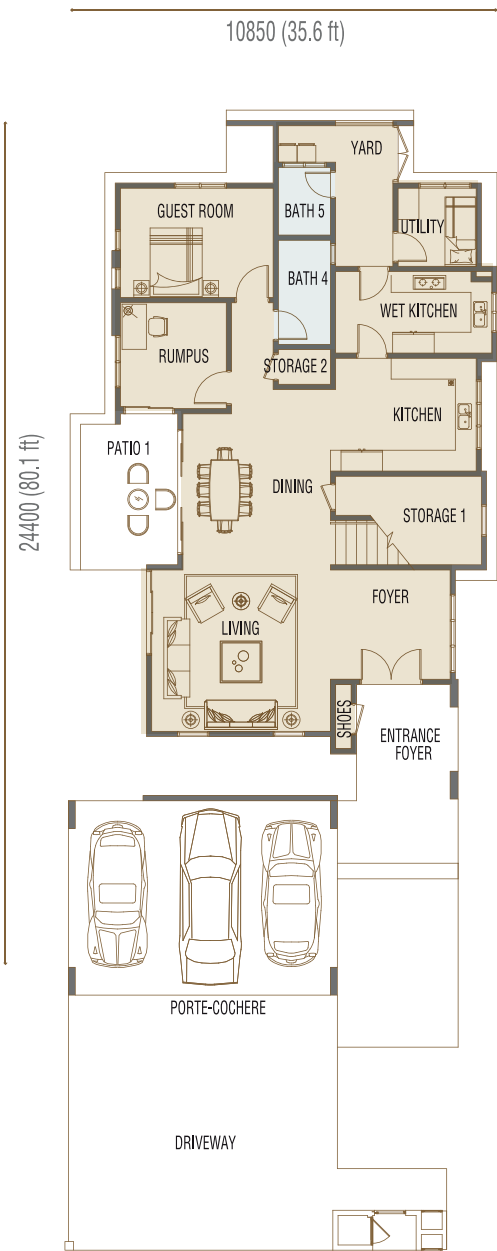
BUILT-UP : 4,306 sf
LAND AREA : 9,967 sf (min) - 13,326 sf (max)

4 UNITS

5 BEDROOMS (LARGER MASTER BEDROOM THAN BANSARI VILLAS) | 5 BATHROOMS | 1 UTILITIES ROOM | RUMPUS ROOM ON GROUND FLOOR | 2 KITCHENS | MASTER BED-ROOM WITH WALK-IN WARDROBE | CAR PORCH CAN FIT 3 CARS SIDE-BY-SIDE



FIRST FLOOR



GROUND FLOOR

SPECIFICATIONS

STRUCTURE	REINFORCED CONCRETE STRUCTURE
WALLS	CLAY BRICKWALL WITH CEMENT PLASTER
ROOF COVERING	CONCRETE ROOF TILES
	REINFORCED CONCRETE FLAT ROOF
ROOF FRAMING	TIMBER ROOF TRUSSES
CEILING	CEILING BOARD
	SKIM COAT
WINDOWS	ALUMINIUM FRAMED WINDOW
DOORS	
ENTRANCE	TIMBER DOOR
BEDROOMS	TIMBER DOOR
BATHROOMS	TIMBER DOOR
OTHERS	ALUMINIUM SLIDING DOOR / TIMBER LOUVRED DOOR
	ALUMINIUM LOUVRED DOOR
IRONMONGERY	QUALITY LOCKSET
FLOOR FINISHES	
CAR PORCH	TILES
LIVING & DINING	TILES
ENTRANCE & PATIO	TILES
FOYER	TILES / TIMBER FLOORING
GUEST ROOM & RUMPUS	TILES
KITCHEN, YARD & BATHROOMS	TILES
BEDROOMS & FAMILY AREA	TIMBER FLOORING
WARDROBE/ LINEN	TIMBER FLOORING
STAIRCASE	TIMBER FLOORING
UTILITY/ STORE/ BALCONY	TILES
WALL FINISHES	
EXTERNAL WALL	PLASTER & PAINT
INTERNAL WALL	SKIM COAT & PAINT
BATHROOMS	TILES
DRY KITCHEN	TILES
WET KITCHEN	TILES
SANITARY & PLUMBING FITTINGS	
KITCHEN SINK	2 NOS
WATER CLOSET	5 NOS
WASH BASIN	5 NOS
SHOWER	5 NOS
ELECTRICAL INSTALLATION	
LIGHT POINT	54
GATE LIGHT POINT	2
POWER POINT	48
TV POINT	3
CEILING FAN POINT	12
WALL FAN POINT	1
TELEPHONE POINT	3
AIR-CONDITIONER POINT	10
WATER-HEATER POINT	4
GATE BELL POINT	1
AUTOGATE POINT	1
NETWORK POINT	3
FENCING	LOW BRICKWALL WITH MS GRILLE (FRONT)
	STEEL MESH FENCING (SIDE)
TURFING	PROVIDED
INTERNAL TELEPHONE TRUNKING & CABLING	PROVIDED